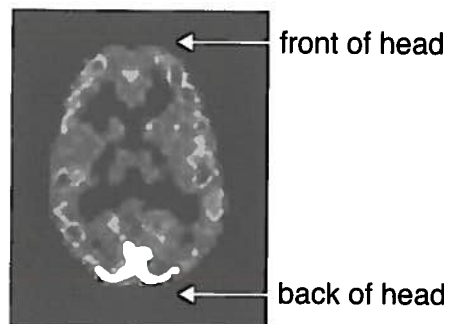
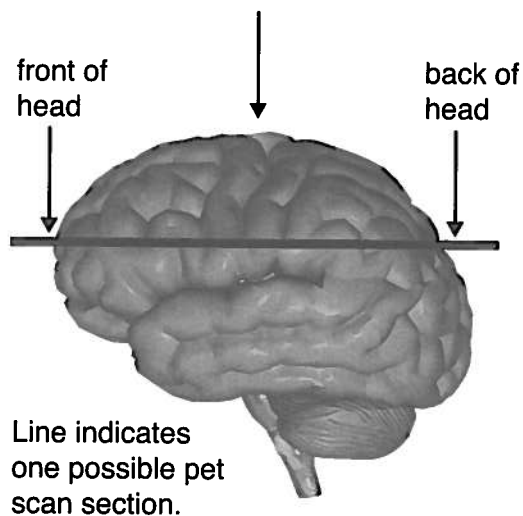


Basics about PET Scans

One way scientists study the brain is through positron emission tomography (PET) scans. PET scans allow scientists to create images of the brain in action. PET scans look like a slice of a person's brain.

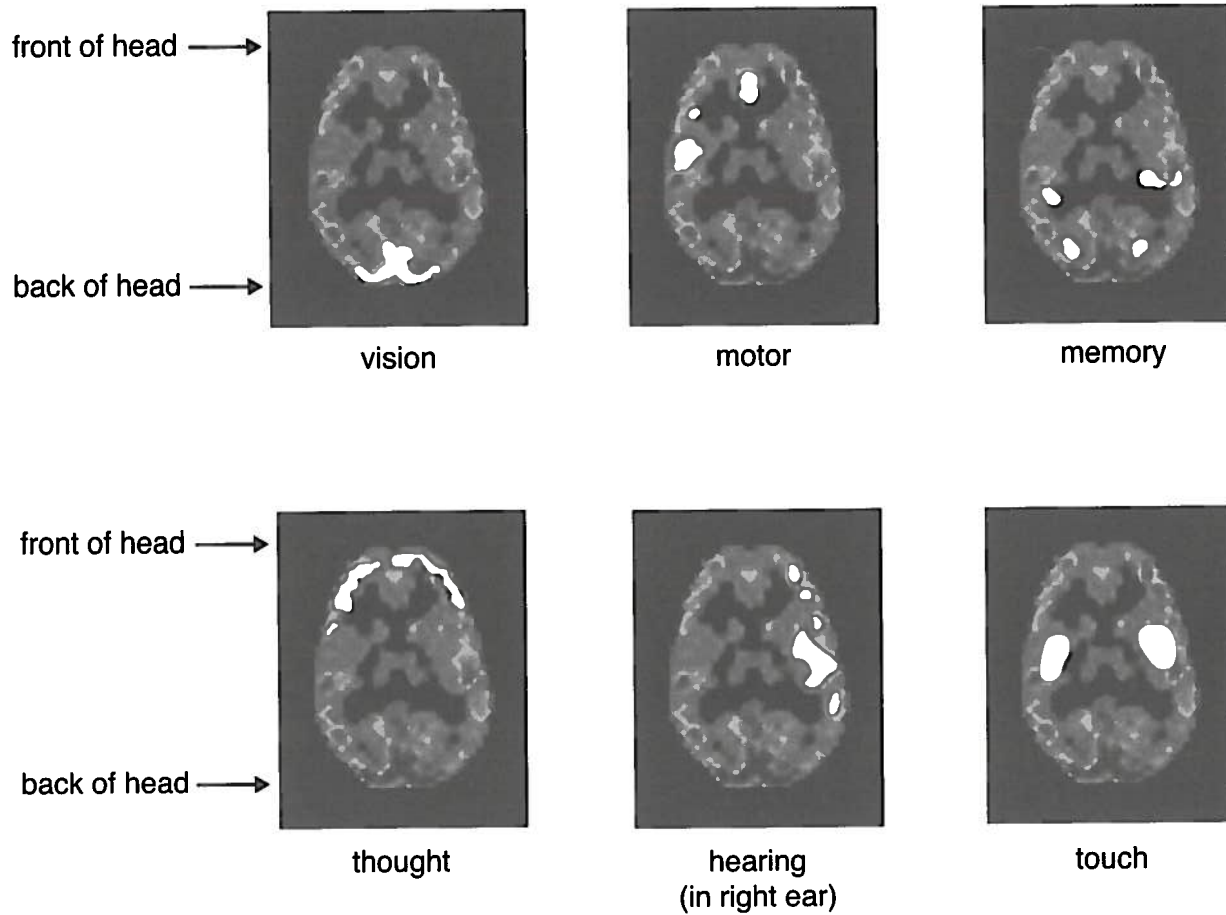
The brain uses the sugar *glucose* for energy. The more active a brain area is, the more glucose it uses. Before they take a PET scan, trained scientists give people small amounts of radioactive glucose so they can see the glucose in their brain. The active parts of the brain appear as bright white spots in the image.

PET scan shows a top view of the brain.



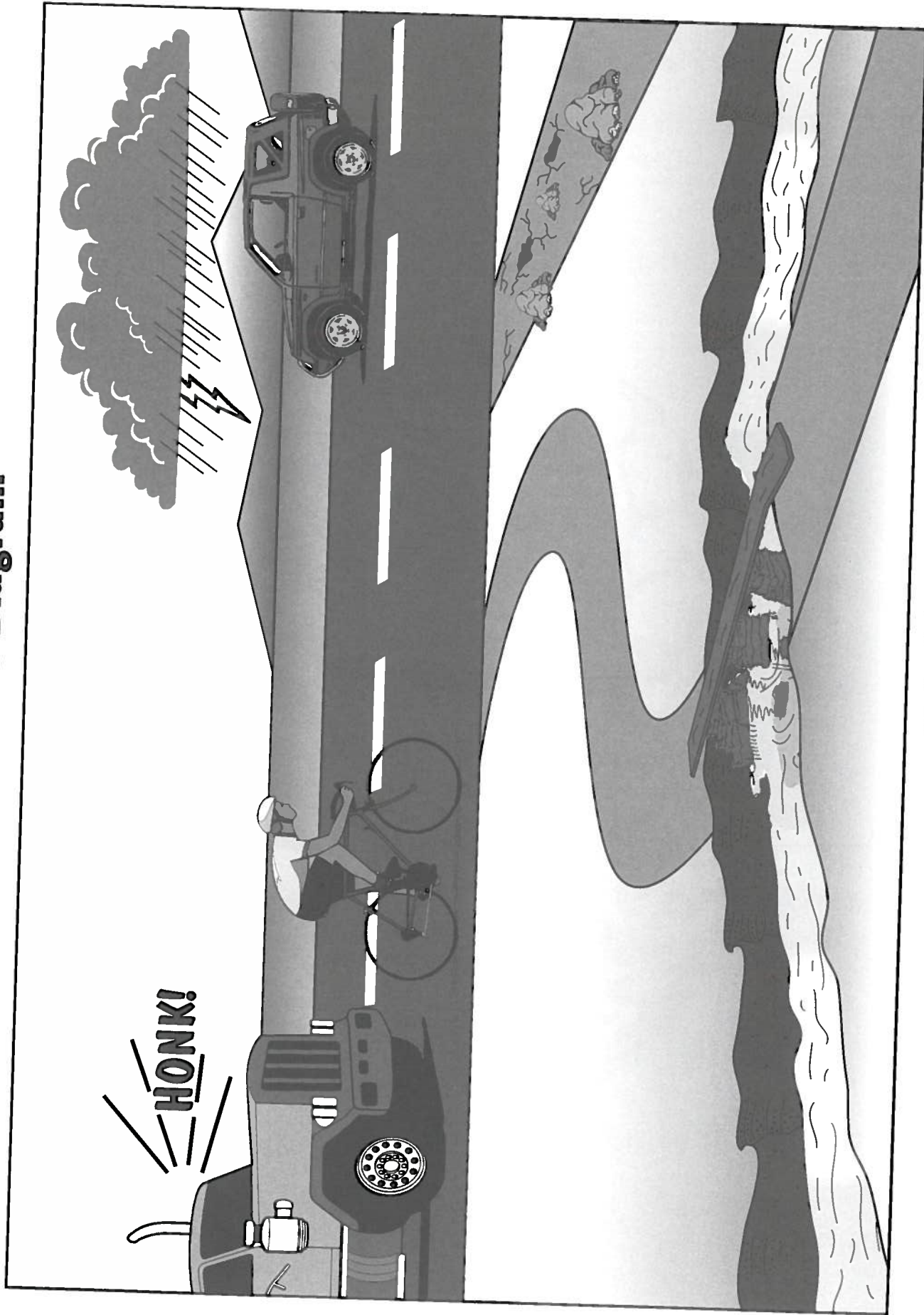
PET scan of a person processing visual information—view is from above the head.

Sample PET Scans



These PET scans show the brain as seen from above.

Scenario Diagram



Master 2.3

Brain Outline

Name: _____ Date: _____

front of head

